

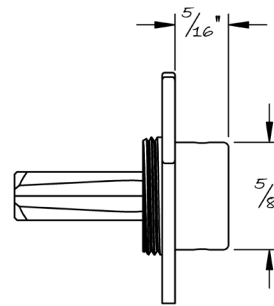
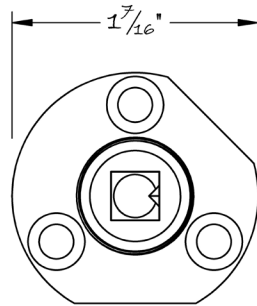
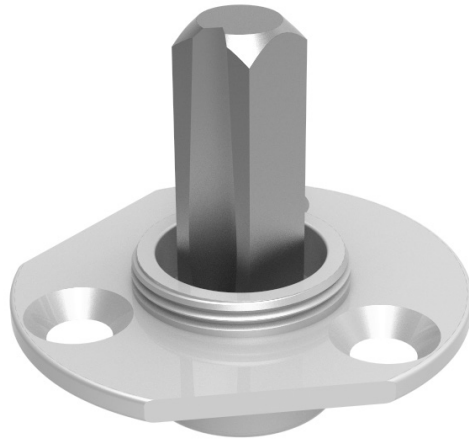


LOWE HARDWARE

No. 4564L

---

THREADED DUMMY SUBROSE



*Threaded dummy subrose.*

*To be used for mounting dummy levers to roses.*

*CNC machined from solid brass. Supplied with #8 phillips head screws.*

---

• DESIGNED, MANUFACTURED & HAND FINISHED IN MAINE SINCE 1977 •

73 SPRING STREET NEW YORK, NY 10012 (212) 390-0660

WWW.LOWE-HARDWARE.COM